

Watto Purrunga Aboriginal Health

Providing high-quality, culturally responsible primary health care for Aboriginal and Torres Strait Islander people.

Watto Purrunga is a Kaurna name meaning “the branch of life”

Locations

Muna Paiendi

Corner of Mark & Oldham Roads
Elizabeth Vale
(08) 8182 9206

Maringga Turtpandi

1 Gilles Crescent, Hillcrest
(08) 7425 8900

Wonggangga Turtpandi

11 Church Street, Port Adelaide
(08) 8240 9611

Kanggawodli

16-22 Clements Street, Dudley Park
(08) 8342 2250




NORTHERN ADELAIDE LOCAL HEALTH NETWORK


sahealth.sa.gov.au/nalhn

**EVERYONE
HAS A STORY.
MATTERS.
CONTRIBUTES.
GROWS.**

**Watto Purrunga
Walk-In Clinics**



 @northernadelaidehealth

 @northernadelaidehealth

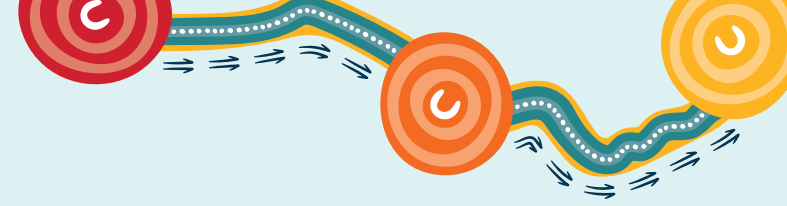
sahealth.sa.gov.au/nalhn



© Department for Health and Wellbeing,
Government of South Australia. All rights reserved.



Health
Northern Adelaide
Local Health Network



How Does the walk-in clinic work?

- Appointments are only available on the day and in person
- Clients will be seen by the GP in order of their arrival
- There may be an increase in waiting time if another client presents with a medical emergency
- If a consumer decides not to wait, they can book into an afternoon appointment on another day
- Transport assistance is not available to attend a walk-in clinic
- Alternative options for medical care will be discussed with you if you are not able to be seen before end of the walk-in clinic
- Please ensure you bring your current Medicare card and Health Care Card (where required)

Services available during walk-in clinics

Walk-in clinics are for short appointments with a GP with only one health issue to be discussed and for one person only.

Examples include:

- Recent illness & injury, colds, gastro and infection.
- Repeat prescriptions
- Repeat referrals
- Results of tests (e.g., X-rays or blood tests)
- Chronic or long-term illness if unwell on the day (only one issue will be discussed)

The Aboriginal Health Practitioner or Registered Nurse will discuss other appointment options, as some services require longer appointment times on another day.

Services not available during walk-in clinics

- Medical reports
- Centrelink reports
- Drivers licence forms
- Care Plans or Health Assessments
- Review of Care Plans or Health Assessment
- Housing Letters
- Legal Letters
- Some women's health procedures and checks
- New referrals
- Regular review of chronic and long-term illnesses such as diabetes, asthma or heart disease

These services will require longer appointment times and consumers will need to make a booked GP appointment on another day.

