

Education options

The Australian Government funds a range of national palliative care projects primarily focused on education, training, quality improvement and advance care planning. They are:

Advance Care Planning Australia

Six online modules are available ranging from an introduction to advance care planning to more specialised courses for health professionals.

- > Module 1: Advance Care Planning Introduction
- > Module 2: Advance Care Planning Conversations
- > Module 3: Advance Care Planning Decision-Making – The Legal Implications
- > Module 4: Advance Care Planning Implementation
- > Module 5: Advance Care Planning in the Primary Care Setting
- > Module 6: Advance Care Planning and Dementia
- > Module 7: Advance Care Planning Aged Care
- > Module 8: Advance Care Planning and Cultural Diversity
- > Module 9: Advanced Communication

Target audience: All health professionals and care workers.

CareSearch: My Learning

There are ten case-based online learning modules that introduce the resources in CareSearch and how they can be used in clinical practice:

- > My Learning 1: Finding Evidence (Published Literature)
- > My Learning 2: Finding Evidence (Searching for Evidence)
- > My Learning 3: Searching the Web
- > My Learning 4: Residential Aged Care
- > My Learning 5: Dementia
- > My Learning 6: Carers
- > My Learning 7: Knowledge Translation
- > My Learning 8: Disseminating Research Findings
- > My Learning 9: New to Palliative Care?
- > My Learning 10: Allied Health

Target audience: All health professionals and care providers working in primary care or other non-specialist palliative care settings.

End-of-Life Essentials Education Modules

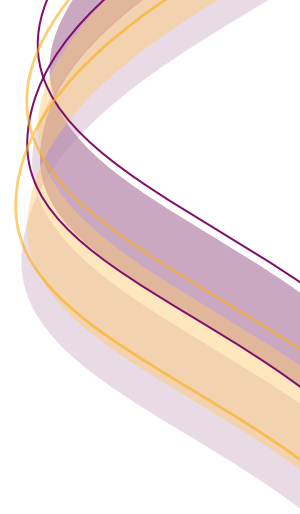
The education modules provide clinically relevant and evidence based learning materials with quizzes, evidence based links and educational videos. Clinicians are encouraged to examine their own practice and build on their individual expertise across a wide range of issues which are fundamental to quality and safe end-of-life care in hospitals.

- > Module 1: Dying, a normal part of life
- > Module 2: Patient-centred communication and shared decision-making
- > Module 3: Recognising the end-of-life
- > Module 4: Planning end-of-life care– goals of cared
- > Module 5: Teams and continuity for the patient
- > Module 6: Responding to concerns
- > Module 7: Emergency Department end-of-life concerns
- > Module 8: Paediatric end-of-life-care
- > Module 9: Chronic, complex illness end-of-life care
- > Module 10: Imminent death: how to respond

Target audience: All clinical staff working in acute hospitals involved in delivering end-of-life care.



end of life care strategy



Online religious and culturally sensitive advance care planning (ACP Talk)

ACPTalk provides informational support for health professionals conducting advance care planning with people from different religious and cultural backgrounds. The 'search' function enables users to select a religion and denomination (if applicable) and review background information and advice on advance care planning for a particular religion/faith or culture.

PCC4U Online learning modules

PCC4U promotes the inclusion of palliative care education as an integral part of all medical, nursing, and allied health undergraduate and entry to practice training, and ongoing post-graduate professional development.

Core Modules

- > Module 1: Principles of palliative care
- > Module 2: Communicating with people with life-limiting illnesses
- > Module 3: Palliative assessment & intervention
- > Module 4: Optimising function in palliative care

Focus topics

- > Topic 1: Multidisciplinary care
- > Topic 2: Caring for Aboriginal people with life-limiting conditions
- > Topic 3: Caring for children with life-limiting conditions
- > Topic 4: Culture-centred care of people with life-limiting conditions

EN Toolkit

- > Topic 1: Principles of palliative care
- > Topic 2: Communicating with people with life-limiting conditions
- > Topic 3: Principles of symptom assessment and management
- > Topic 4: Assessment and management of pain
- > Topic 5: Optimising function in palliative care
- > Topic 6: Terminal care and bereavement support

Palliative Care Outcomes Collaboration (PCOC)

Provides a range of training and learning opportunities

> PCOC Fundamentals Workshop

An interactive, full day package designed to enhance knowledge of PCOC, the clinical assessment tools and the use of PCOC.

Target audience: Clinicians who are new users of the clinical assessment tools and / or are implementing PCOC into routine clinical practice.

> PCOC Medical Officers Workshop

This one and a half hour interactive education package specifically aims to highlight the role of PCOC in palliative care services, emphasise the use of the five PCOC clinical assessment tools and provide an overview of the significance of patient outcome reports and benchmark measures.

Target audience: Medical Officers who are new users of the clinical assessment tools and / or are implementing PCOC into routine clinical practice. This workshop is also suitable for senior members of the palliative care team who are not required to attend a full day Fundamentals Workshop, including Nurse Managers and Senior Allied Health.

> PCOC Executive Officers Workshop

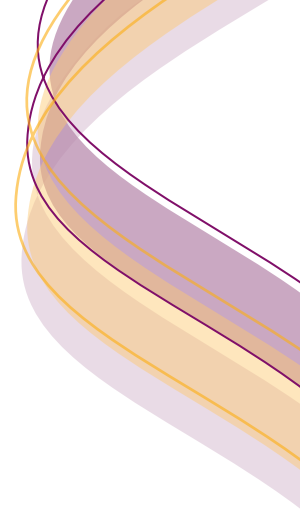
This one hour education package specifically aims to highlight the role of PCOC in palliative care services and highlight the significance of Patient Outcome Reports and benchmark measures.

Target audience: Senior managers and executives of palliative care services that implementing PCOC in to routine clinical practice, or are planning to do so.

> Orientation Education Resources

The PCOC website has several education resources designed to introduce new users to the PCOC programme and specifically the clinical assessment tools.

end of life care strategy



Palliative Care Online Learning Modules (AHHA)

Four online modules designed to support care workers in applying the Guidelines for a Palliative Approach to Aged Care in the Community (COMPAC) to their practice.

Training modules include:

- > Module 1: A Palliative Approach to Care
- > Module 2: Planning and Assessment
- > Module 3: Providing Care to Clients and Carers
- > Module 4: Delivering a Palliative Approach for Aged Care in the Community Setting

Two online skills modules include:

- > Module 1: Pain Management
- > Module 2: Recognising the Deteriorating Client

Target audience: All health professionals and care providers (including volunteers and unpaid carers) working in or with an interest in community-based palliative care settings.

Quality of Care Collaborative Australia (QuoCCA)

Delivers education in paediatric palliative care.

- > Education sessions – scheduled multidisciplinary sessions can be arranged at any metropolitan, regional, rural or even remote setting. Half or full day workshops are available.
- > Pop-up – we can come to you! A team of specialist paediatric palliative care teams and educators can visit for education around a specific case consult as guided by the child, family and/or local health team.
- > Self-paced On-line learning module: [Communicating with families about children who have life-limiting conditions](#)

Talking End of Life with people with intellectual disability (TEL)

The 12 modules are designed around a suite of three topics.

How do I do this? Why is this important

- > Cultural beliefs
- > Managing feelings
- > Your role as a DSP
- > Handy teaching skills

Teaching how to understand end of life: Any or all of these 3 modules will help you to teach about dying, death, and loss, grief and mourning.

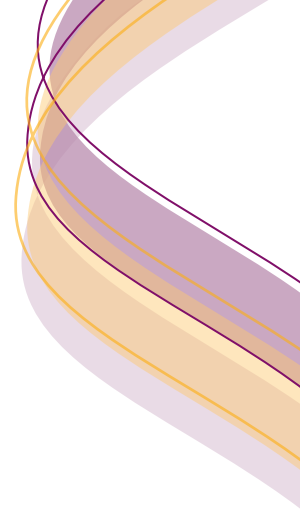
- > Dying
- > Death
- > Loss, grief and mourning

Teaching the planning options: Any or all of these 4 modules will help if you want to teach about how to plan for dying and death.

- > Bequeathing
- > Funeral wishes
- > Care when dying
- > Organ and tissue donation

Target audience: It is designed for disability support professionals (DSPs) but is also helpful for families, health professionals, and educators.

end of life care strategy



The Advance Project

The Advance Project team has developed eLearning modules specifically designed to meet the learning needs of individual groups, including:

- > General Practitioners - The Advance Project GP module
- > Practice Managers - The Advance Project Practice Manager module
- > Nurses - The Advance Project General Practice Nurse module

Target audience: General practice staff

The Program of Experience in the Palliative Approach (PEPA)

PEPA Clinical placements

Participants undertake an observational placement of 2-5 days in a specialist palliative care inpatient, community or hospital based consultancy setting. Participants are supported to transfer learning into practice.

Target audience: All health professionals and care providers working in primary care or other non-specialist palliative care settings.

Reverse PEPA Placements

A specialist palliative care staff member travels to the residential aged care service or Aboriginal health service to facilitate palliative care learning.

Target audience: All health professionals and care providers working in primary care or other non-specialist palliative care settings where this model of learning is more appropriate.

Core Palliative Approach Workshops (face to face group workshops)

- > Palliative Approach
- > Palliative Approach in Aged Care Workshop
- > Palliative Approach for Aboriginal & Torres Strait Islander Healthcare Professionals

Target audience: GPs and other medical officers, RNs, ENs, allied health professionals, ENs, Care workers, PCAs, AINs, Aboriginal and Torres Strait Islander Healthcare

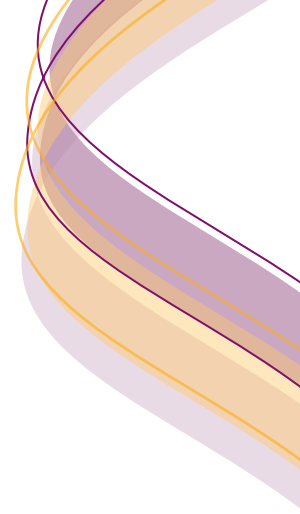
Focus Topic Workshops (face to face group workshops)

- > Culture-centred care from Indigenous Australian perspectives
- > Culture-centred care from Multicultural perspectives

Target audience: All health care providers working with advanced and life-limiting illnesses

Support and Leadership workshops/Mentoring workshops

end of life care strategy



SA Training and Education

GP Shared Care Program

Range of CPD courses associated with Palliative Care Shared Care program and framework

Adelaide PHN

- > Ongoing topic specific training
- > SA Health pathways

SA Health

- > Advance Care Directives
- > Consent to Medical Treatment
- > Resuscitation Planning - 7 Step Pathway

Formal Qualifications

Charles Sturt University

Programs offered

- > Master of Nursing (Palliative Care)
- > Master of Ageing and Pastoral Studies
- > Graduate Diploma of Ageing and Pastoral Studies

csu.edu.au

Flinders University

Programs offered

- > Palliative Care
- > Graduate Certificate in Palliative Care
- > Graduate Diploma in Palliative Care
- > Master of Palliative Care
- > Palliative Care in Aged Care
- > Graduate Diploma in Palliative Care in Aged Care
- > Master of Palliative Care in Aged Care
- > PhD

flinders.edu.au/courses/postgrad/

LaTrobe University

Programs offered

- > Graduate Certificate in Health Promoting Palliative Care
- > Master of Health Sciences (Palliative Care Major)

latrobe.edu.au

Monash University

Programs offered

- > Palliative Care

monash.edu.au

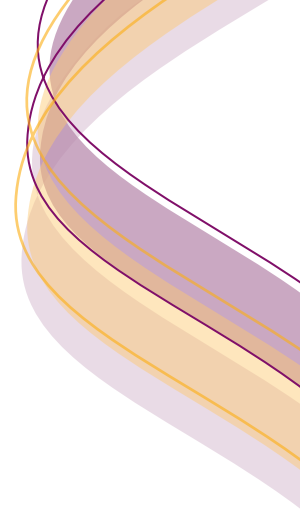
University of Melbourne

Programs offered

- > Specialist Certificate in Palliative Care
- > Graduate Certificate in Palliative Care
- > Graduate Certificate in Nursing Practice (Cancer and Palliative Care)
- > Paediatric Palliative Care

unimelb.edu.au

end of life care strategy



University of Queensland

Programs offered

- > Graduate Certificate in Nursing
- > Introduction to Nursing Practice in Chronic Disease Management and Palliative Care
- > Complex Supportive Care in Chronic Disease Management and Palliative Care

uq.edu.au

University of South Australia

Programs offered

- > Professional Certificate in Palliative Care Nursing

unisa.edu.au/Health-Sciences/Programs-and-Courses/Short-courses/

University of Sydney

Programs offered

- > Graduate Certificate in Pain Management
- > Graduate Diploma in Pain Management
- > Master of Medicine (Pain Management)
- > Master of Science in Medicine (Pain Management)

sydney.edu.au/medicine/pmri/education/index.php

University of Technology Sydney

Programs offered

- > Master of Palliative Care
- > Graduate Diploma in Palliative Care
- > Graduate Certificate in Palliative Care

uts.edu.au/future-students/health

Australian Centre for Grief and Bereavement

Programs offered

- > Graduate Certificate in Bereavement Counselling and Intervention
- > Certificate IV in Bereavement Support

www.grief.org.au

For more information

Department for Health and Wellbeing
Safety and Quality Unit
Telephone: 8226 5016
www.sahealth.sa.gov.au



<https://creativecommons.org/licenses>

Public-I1-A1

© Department for Health and Wellbeing, Government of South Australia.
All rights reserved. FIS: 18049.6 January 2019



Government
of South Australia

SA Health