

## About Barmera

Barmera is located on freshwater Lake Bonney, approximately 220km North-East of Adelaide.



### Population 1,895

Female 52%  
Male 48%

Source: ABS, Population by Age and Sex, Regions of Australia, Area code UCL415005, 2021 Census



### Housing

Median price for a house  
**\$279K**  
Average rental  
**\$280PW**

Source: [propertyvalue.com.au](http://propertyvalue.com.au) September 2022



### Schooling

Primary Schools (public and private)  
Secondary School, regional Study Hub partnering with a number of universities) and TAFE SA Campus located within less than 15kms

### Other benefits

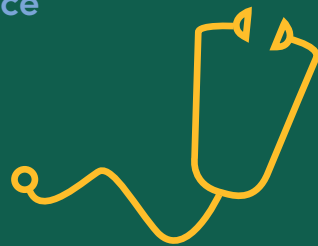
- Wetlands and wildlife, Lake Bonney offers opportunities for yachting enthusiasts, water skiers, windsurfers and kite-surfers as well as canoeing, fishing and waterskiing
- Tennis courts, a yacht club, an aquatic hire, basketball and volleyball courts, football club and cricket ground
- Surrounded by a myriad of flora and fauna.



### Barmera Health Service

Services available:

- Acute Care
- Womens Health
- Podiatry
- Aboriginal Health
- Aged Care
- Allied and Community Health
- Mental Health
- Child and Family Health Services



### Workforce

- Administration
- Community and Allied Health
- Health Ancillary
- Medical
- Nursing
- Operational Services

 Hawdon Street Barmera SA (08) 8588 0400

For more information, visit [Careers at RMCLHN](#)

Follow us on Facebook at [www.facebook.com/RMCLHN](http://www.facebook.com/RMCLHN)

Visit our website at [www.sahealth.sa.gov.au](http://www.sahealth.sa.gov.au)

### Further Information

[Child care options](#)  
[The Good Schools Guide](#)  
[TAFE SA](#)  
[Berri Barmera Council](#)  
[Realestate.com.au](#)  
[SA Community](#)  
[More about the region](#)



Photo credit: southaustralia.com