



NALHN ENVIRONMENTAL SUSTAINABILITY STRATEGY

2023–2025

Endorsed – October 2023



Government
of South Australia

Health
Northern Adelaide
Local Health Network

sahealth.sa.gov.au/nalhn



ACKNOWLEDGEMENT OF COUNTRY

Northern Adelaide Local Health Network (NALHN) acknowledges the Kurna people as the traditional custodians of the land where we proudly work and deliver health and wellbeing services.

Ngadlu tampinthe purkarna pukinangku, yalaka, tarrkaritya.

Ngadlu tampinthe yaitya mathanya kuma parnaku tuwila yartangka.

Northern Adelaide Local Health Network (NALHN) acknowledges the Kurna people as the traditional custodians of the land where we proudly work and deliver health and wellbeing services.

We also honour Kurna Elders past, present and emerging.

We recognise Aboriginal cultural authority, and their ongoing spiritual connection to Country.



ARTWORK AND STORY

The artwork was by Ngarrindjeri artist, Jordan Lovegrove. The Story was told by the NALHN Aboriginal Consumer Reference Group.

The artwork represents NALHN's journey assisting Aboriginal people with health and wellbeing and the pathway is NALHN's catchment area. The centre represents the core values of NALHN where everyone has a story, everyone matters, everyone contributes, and everyone grows. The pathways and footprints show we are all on a journey towards better health outcomes, working together with our consumers, their families and NALHN.

CONTENTS

4	Message from the Chief Executive Officer
5	Message from the Governing Board Chair
6	Introduction
7	Purpose of this Strategy
8	Sustainability Values
9	Sustainability Targets
11	Sustainability Initiatives
	Innovative Leadership
	Energy and Infrastructure
	Food and Organics
	Clinical Care
	Waste and Resource Recovery
16	Governance and Reporting
17	References

**EVERYONE
HAS A STORY.
MATTERS.
CONTRIBUTES.
GROWS.**



MESSAGE FROM THE CHIEF EXECUTIVE OFFICER

I am proud to present the Northern Adelaide Local Health Network's first Environmental Sustainability Strategy 2023–25. This Strategy is the first of its kind in South Australia and demonstrates our commitment to improving our environmental footprint.

It is no secret the impacts of climate change, coupled with the rise of the pandemic, have created vast amounts of additional medical waste globally. At NALHN, we understand the need to reduce our carbon footprint and make sustainable improvements for our future generations.

While the health of our community will always remain our highest priority, this Strategy is our safeguard to ensure that environmental impacts are considered in our decision-making. In delivering sustainable initiatives, we have identified our five key environmental values over the next two years:

1. Innovative Leadership
2. Energy and Infrastructure
3. Food and Organics
4. Clinical Care
5. Waste and Resource Recovery

Other states across Australia are proactive in their approach to implementing sustainable programs across their healthcare sector. NALHN's Strategy builds upon this work and sets targets to guide our sustainability actions.

We are embarking on a sustainability journey that will result in a reduction of waste and energy consumption and overall greener hospital sites- even the smallest changes can have significant impacts on our environment.



MAREE GERAGHTY

**Chief Executive Officer
NALHN**

MESSAGE FROM THE GOVERNING BOARD CHAIR

I am delighted to share with you NALHN's Environmental Sustainability Strategy 2023–25.

Through implementing this Strategy, we are doing our part to help South Australia achieve its first milestone target of reducing its carbon emissions by 50% by 2030. We understand that creating a healthy environment is a fundamental component of good health as clean air, safe water and food supply are paramount to ensure our wide and diverse community remains well.

Thanks to the hard work of our Executive team champions, I am pleased to announce that NALHN has incorporated 'environmental sustainability' as part of its strategic imperatives. This highlights the Governing Board's commitment to encouraging staff to consider environmental impacts when making decisions in the delivery of day-to-day care.

The lifecycle of this Strategy is two years which aligns with NALHN's Strategic Plan 2020-25. As I commence my first term as NALHN's Governing Board Chair, I look forward to seeing the outcomes of this Strategy as we work together to make our hospital network more sustainable.



PROFESSOR JUDY SEARLE

**Governing Board, Chair
NALHN**



INTRODUCTION

The Northern Adelaide Local Health Network (NALHN) provides a range of healthcare services to a population of more than 400,000 people living primarily in Adelaide's north and north-eastern suburbs, and is the fastest growing region in South Australia (DPTI, 2019). Our service includes the Lyell McEwin and Modbury Hospitals and a number of primary health, Aboriginal health and mental health services.

The healthcare sector in Australia contributes to approximately 7 per cent of our nation's total carbon emissions, which amount to 35,775 kilo tonnes per annum. Within the sector, public hospitals are the highest contributors producing approximately 12,295 kilo tonnes per year (source: Sustainability in Healthcare, Victorian State Government).

NALHN acknowledges the important environmental sustainability work that has already been undertaken in healthcare settings across Australia and we are using this research to benchmark and guide our network's environmental standards. The reduction of carbon emissions across the healthcare sector is a collective effort and NALHN is proud to be leading this work in South Australia.

Pictured: NALHN Sustainability Team for Environment and Mindfulness



PURPOSE OF THIS STRATEGY

This Sustainability Strategy 2023–25 provides NALHN with a framework to guide its environmental reduction targets. It identifies key organisational wide initiatives that will strengthen our network's commitment to reducing the amount of waste sent to landfill, energy consumption and its overall carbon footprint.

This is NALHN's first Environmental Sustainability Strategy and it will form the basis of baseline data for years to come. This strategy aims to:

- provide a consistent approach to sustainability across our LHN over the next two years, recognising that NALHN has already integrated sustainable initiatives across our network (such as the installation of solar, increased green spaces and decreasing paper usage).
- ensure NALHN assets now and into the future are used in the most efficient way.
- provide opportunities for staff to make process and system improvements that improve efficiency, promote personal wellbeing, are environmentally sustainable, and economically beneficial.
- outline NALHN's commitment to improving the local environment for the benefit of our wide and diverse community.





SUSTAINABILITY VALUES

This Sustainability Strategy supports the NALHN Strategic Plan 2020–2025 (Strategic Imperative 4- Sustainability) by promoting sustainable initiatives through innovation and improving our network's efficiency.

NALHN will be guided by the below core sustainability values:



INNOVATIVE LEADERSHIP

Sustainability is embedded in all decision-making across NALHN and leaders support innovative ways that will empower staff to reduce their environmental impact.



ENERGY AND INFRASTRUCTURE

Reduce unnecessary energy consumption and identify opportunities to increase our use of renewable energy in the future.



FOOD AND ORGANICS

Increase organic reuse and promote recycling of used packaging materials.



CLINICAL CARE

Environmental impacts are considered in the delivery of clinical care, and our clinicians are supported to make lower carbon, more sustainable decisions when delivering day-to-day care.



WASTE AND RESOURCE RECOVERY

Reduce waste tonnage across the network, increase recycling and minimise usage of single use plastics.

SUSTAINABILITY TARGETS

In May 2022, South Australia declared a climate emergency and committed to restoring a safe climate by transforming the economy to net zero emissions.

The South Australian Government has committed to the below targets:



REDUCE STATEWIDE EMISSIONS BY 50% BY 2030.



100% RENEWABLE ENERGY GENERATION BY 2030.



ACHIEVE NET ZERO* BY 2050.

* 'Net zero emissions' refers to achieving an overall balance between greenhouse gas emissions produced and greenhouse gas emissions taken out of the atmosphere. Source: Climate Council, 2023.

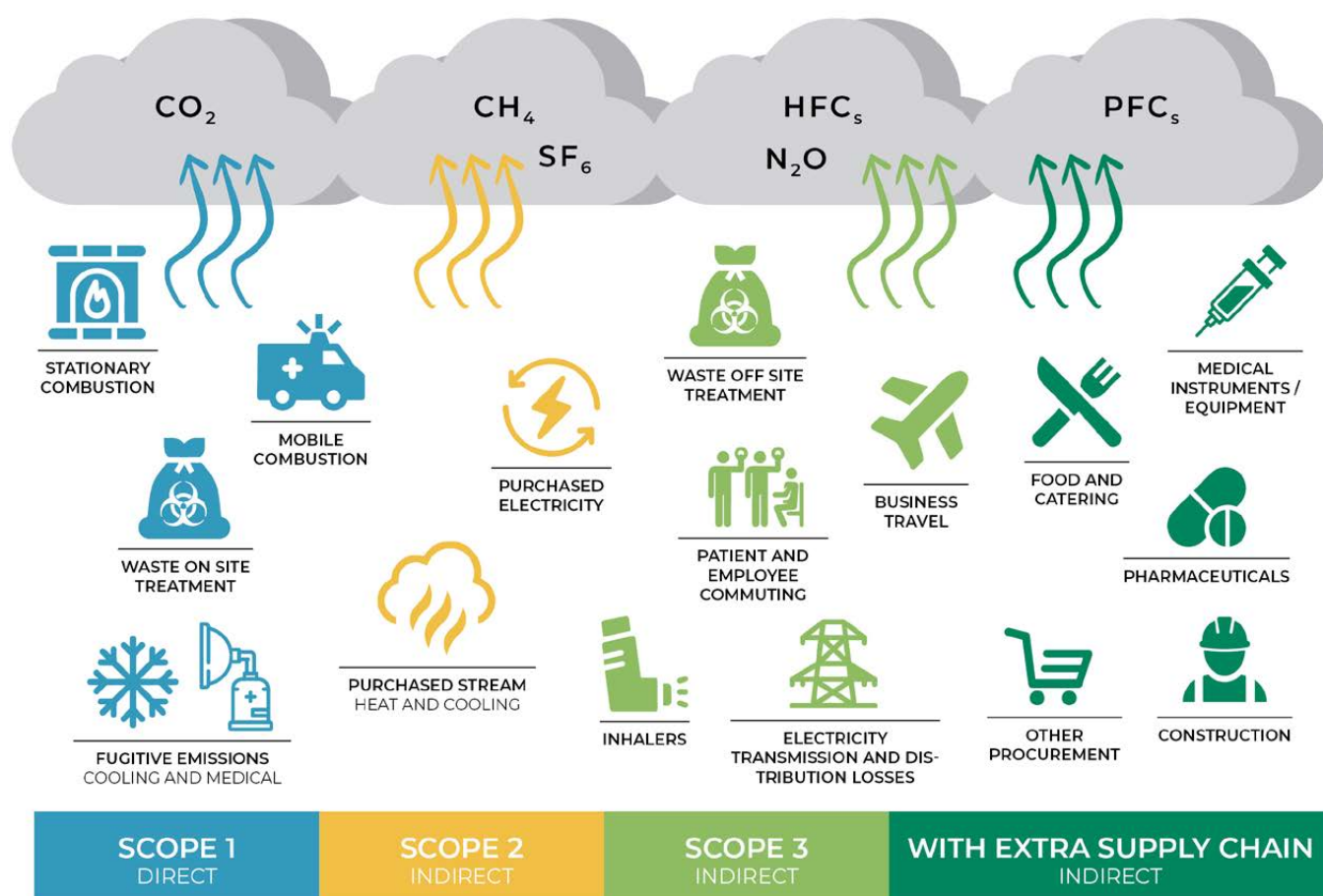


THE HEALTHCARE SECTOR'S CARBON FOOTPRINT

Greenhouse gas emissions are categorised into three categories or 'scopes' by the Greenhouse Gas Protocol, an international accounting tool used by governments to understand, quantify, and manage greenhouse gas emissions (see figure 1).

In healthcare:

- Scope 1 emissions are direct emissions from healthcare facilities or emissions that are released on site (e.g. on-site fossil fuel use, anaesthetic gases).
- Scope 2 emissions are indirect emissions from purchased energy sources (e.g. electricity, cooling, heating).
- Scope 3 emissions cover all other emissions, such as those generated from the suppliers of the components used to make medicines (i.e. embedded in supply chain, manufacturing and production, transport, use and disposal of pharmaceuticals, medical equipment, water and waste).



CO₂ – Carbon dioxide, CH₄ – Methane, N₂O – Nitrous oxide, HFC_s – Hydrofluorocarbons, PFC_s – Perfluorocarbons, SF₆ – Sulphur hexafluoride

Figure 1: Greenhouse gas emissions based on Greenhouse Gas Protocol (source: Government of Western Australia, South Metro Health Service, 2023)

SUSTAINABILITY INITIATIVES

Over the last few years, NALHN has implemented several green initiatives that have shown positive impacts across our network (such as the rejuvenation of green garden spaces and vegetable patches, installation of solar, bicycle storage facilities and fresh produce sharing tables for staff use).

We aim to build on this great progress by implementing the below initiatives over the next two years:



INNOVATIVE LEADERSHIP

Sustainability is embedded in all decision-making across NALHN and leaders support innovative ways that will empower staff to reduce their environmental impact.

1

Include 'Environmental Sustainability' as an organisational Strategic Priority.

2

Develop 'sustainability' intranet pages.

3

Establish a NALHN Environmental and Sustainability Expert Advisory Group (EAG.)

4

Generate staff awareness through the Weekly Wrap via a 'Green guru tip of the week' (regular sustainability updates).

5

Leadership endorsement of a Green Team Program which can be rolled out across NALHN.

6

Develop a communication strategy to guide staff behaviour change initiatives.

7

Develop an e-learning module to educate and inform staff on environmental issues and climate health.



ENERGY AND INFRASTRUCTURE

Reduce unnecessary energy consumption and identify opportunities to increase our use of renewable energy in the future.

1

Consider environmentally sustainable products and design in future redevelopment and construction across all NALHN sites.

2

Investigate the introduction of greener fleet vehicles (including charging provisions for electric vehicles).

3

Utilise natural light wherever possible and replace older air conditioners, refrigerators, other appliances and medical equipment with energy efficient models.





FOOD AND ORGANICS

Increase organic reuse and promote recycling of used packaging materials.

1

Introduce a food and organic waste stream in kitchens across NALHN sites (soil food system).

2

Establish an organic program (targeting compostable waste e.g. food, flowers, paper hand towels- primarily green waste should be listed under this stream).

3

Seek out compostable packaging where possible.

4

Investigate NALHN's participation in local food donation programs (e.g. OZ Harvest, local schools, food banks).

5

Identify ways to better use NALHN green outdoor spaces and garden areas.

6

Explore possibilities to procure food stock from sustainable producers and local manufacturers.





CLINICAL CARE

Environmental impacts are considered in the delivery of clinical care, and our clinicians are supported to make lower carbon, more sustainable decisions when delivering day-to-day care.

1

Reduce the use of anaesthetic gases (Sevoflurane and Desflurane).

2

Progressively decommission Nitrous Oxide pipelines (switch to cylinder use).

3

Integrate sustainable healthcare principles into quality improvements – decrease low value care.

4

Understand and explore synergistic actions that review existing models of care, develop new models of care and clinical pathways that are environmentally and socially sustainable/responsible while maintaining high quality care.





WASTE AND RESOURCE RECOVERY

Reduce waste tonnage across the network, increase recycling and minimise usage of single use plastics.

1

Mitigate single use products where possible and give consideration to environmentally friendly products (minimal packaging, reusable and recyclable products, and avoiding hazardous chemicals and non-degradable materials).

2

Increase NALHN participation in alternative recycling programs.

3

Promote staff behaviour change campaigns such as Plastic Free July (reduction of single use plastic cups).

4

Investigate sustainable textiles destruction program (uniforms, bed sheets, curtains etc).

5

Increase opportunities for recycling (container deposit recycling, aluminium DES/SEV/mask clips, kitchen cans, single use instruments).

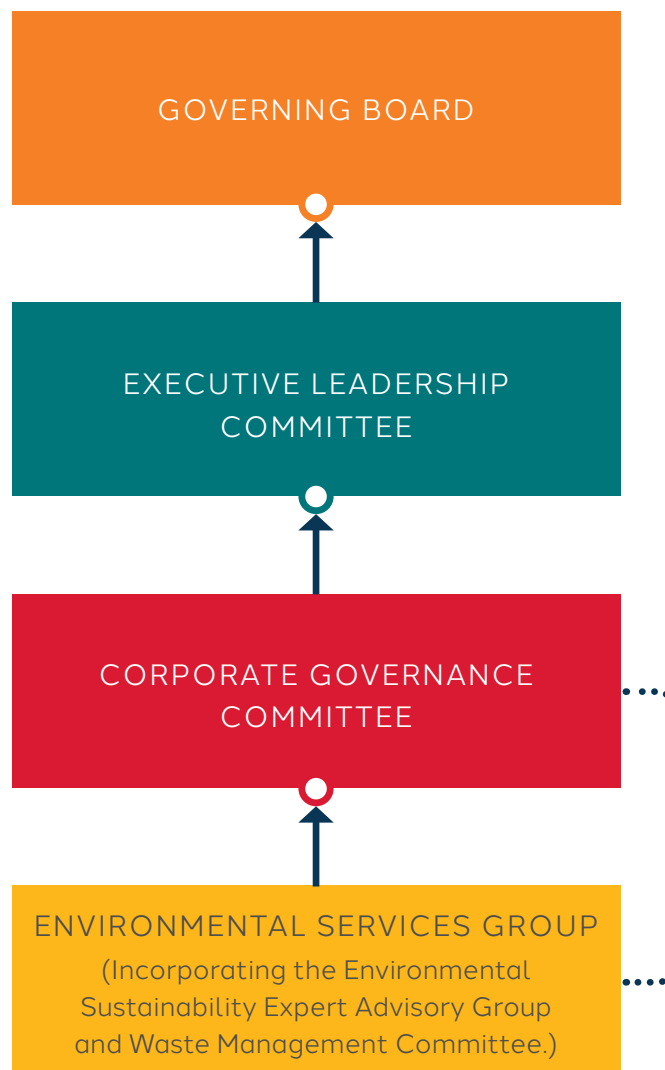




GOVERNANCE AND REPORTING

To track the progress of NALHN's sustainability initiatives, the below Governance Committees will provide oversight and receive regular quarterly updates on the implementation of this strategy via a Sustainability Reporting Scorecard.

- Information sharing
- Quarterly report provided



REFERENCES

- NALHN Environmental Sustainability Strategy 2018–2023, Victorian State Government.
- Environmental Sustainability Strategy 2023–2026, South Metropolitan Health Services, Government of Western Australia.
- Decarbonising clinical care in Australia, Deeble Institute for Health Policy Research, Deeble Institute.





FOR MORE INFORMATION

Sustainability and Environment
Project Officer

Lyell McEwin Hospital

Haydown Road,
Elizabeth Vale SA 5112

(08) 8182 9854



Health
Northern Adelaide
Local Health Network