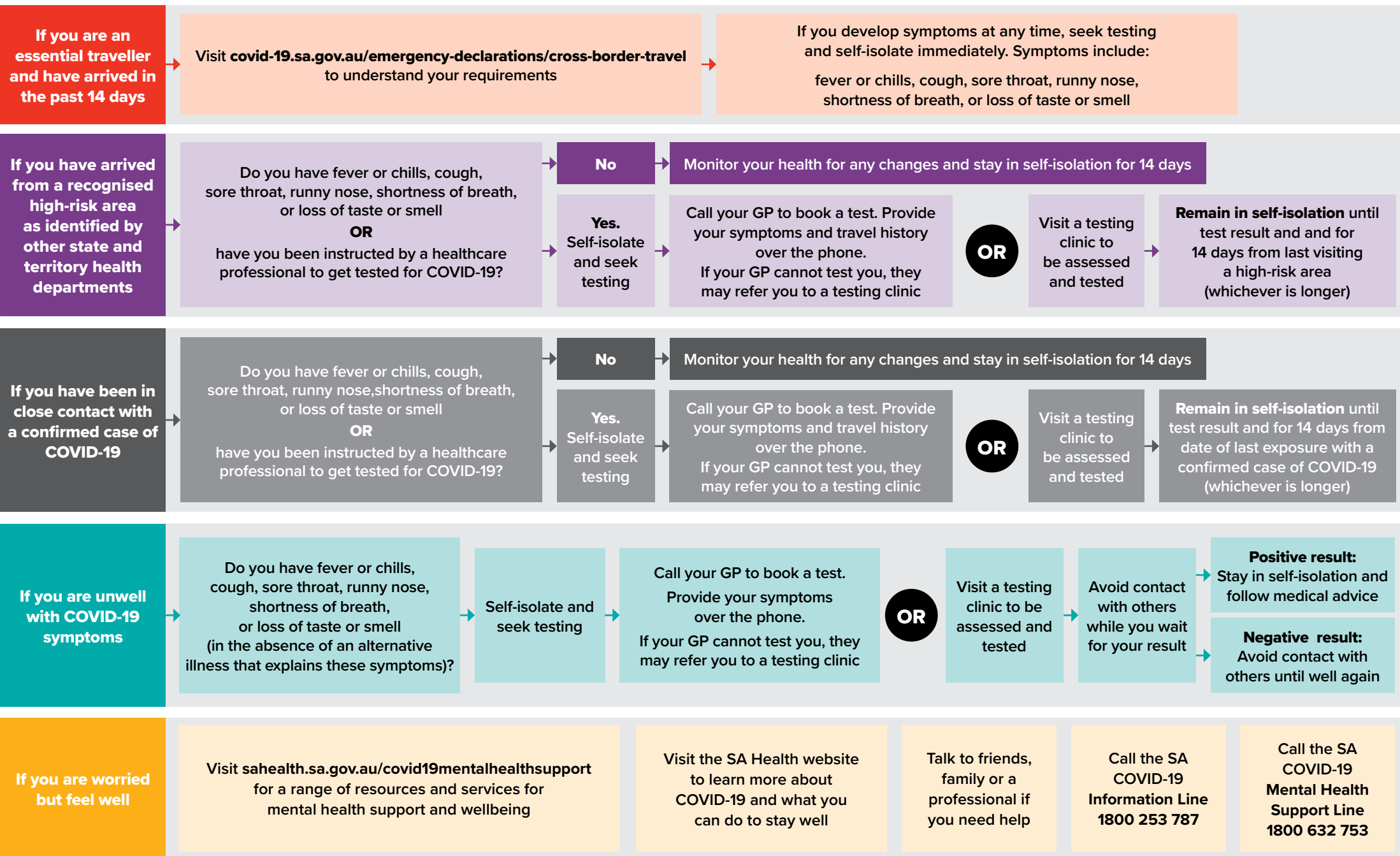


COVID-19 TESTING GUIDE

In a medical emergency, call triple zero (000) immediately.



Health Practitioners should refer to the latest COVID-19 CDNA National Guidelines for a comprehensive list of case definitions and sahealth.sa.gov.au/healthalerts

UPDATED 18 NOVEMBER 2020

sahealth.sa.gov.au/COVID2019



Government of South Australia
SA Health

IS: 200158