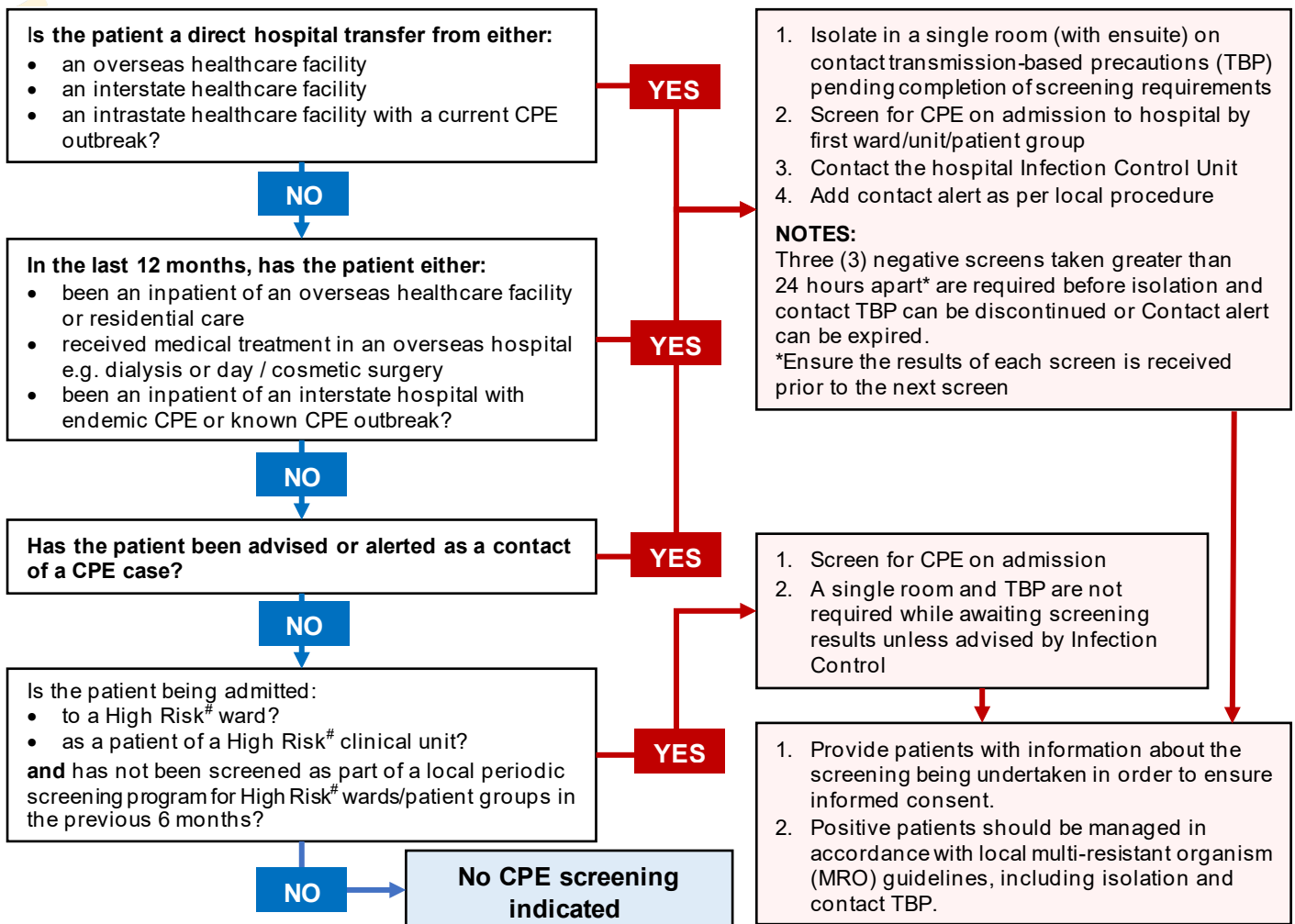


# Carbapenemase-producing Enterobacterales (CPE) admission screening



**NOTES:**  
Additional point prevalence or admission/discharge screening should be considered for units/wards with increased risk of CPE acquisition and / or transmission (refer example schedule below) and may also be required as advised by Infection Control Service (ICS) during outbreak management.  
<sup>#</sup>e.g. intensive care, haematology/oncology, transplant, burns, dialysis or gastroenterology/gastrointestinal surgery, and NICU babies born to CPE mothers

Additional CPE Screening - for consideration					
Location/Unit	Admission	Discharge	Weekly	Monthly	6 monthly
Discharge from Intensive care units		✓			
Discharge to Rehabilitation facilities		✓			
Discharge to Residential Aged Care		✓			
Dialysis Units					✓
Wards with a known CPE case who has transmission risk factors e.g. diarrhoea, faecal incontinence, uncontained discharging wounds			✓		
Ward stay >30 days* in acute healthcare facility				✓	

**Transmission risk areas:** weekly and discharge screens for 8 weeks, then monthly screens for 6 months, and 3 monthly for 6 months (unless otherwise advised by Infection Control)  
\* Excluding wards undergoing weekly or fortnightly screening and areas identified as low risk by local infection control unit.

**A CPE screen is a test for the detection of carbapenemase-producing Enterobacterales**

**A CPE screen includes:**

- faecal specimen (stomal specimen if enterostomy present)

**OR**

- rectal swab with visible faecal matter.

**Other specimens:**

- Urine from catheterised patients should be included for screening
- Specimens from open wounds, or aspirates from any tubes or drains should also be considered for screening

**NOTE:** For SA Pathology requests, document **"CRE screen"** on the pathology request form.  
If a clinical specimen is required e.g. catheter urine and/or wound swab, document MC&S on the pathology request form.

**Additional information can be found at the below websites:**  
1. [SA Health MRO web page](#)

- 
2. [Australian Commission on Safety and Quality in Healthcare \(ACSQHC\) CPE webpage](#)