

Far North Health Services

Service Plan Summary

2023-2028

Our Health Service

Far North Health Services (FNHS) is part of the Eyre and Far North Local Health Network (EFNLHN) and incorporates the Coober Pedy Hospital, Coober Pedy Community Health Service and Oodnadatta Clinic.

Coober Pedy Hospital is funded as a Multi-purpose Service (MPS) with 11 acute multi-day beds and 4 aged care beds. The hospital provides a 24/7 accident and emergency service, acute inpatient care, and aged care under the same roof. The Medical Practice is also operated by EFNLHN and is co-located with Community Health within the health and hospital precinct at Coober Pedy. Oodnadatta Health Services (the Oodnadatta Clinic) provides a 24-hour, seven-day emergency service for Oodnadatta and the surrounding area. The Royal Flying Doctor's Service (RFDS) provides a clinic once per month.

FNHS serves a catchment population of 2,097

A co-design service planning process was undertaken in 2022/23 involving our community, consumers, health leaders, staff, clinicians and partners. The outcome is a service plan that will guide our actions and efforts over the next five years and beyond.

Our EFNLHN Vision

A trusted provider of accessible, responsive, and innovative health, disability, and aged care services to support the wellbeing of our diverse communities.

Our EFNLHN Purpose

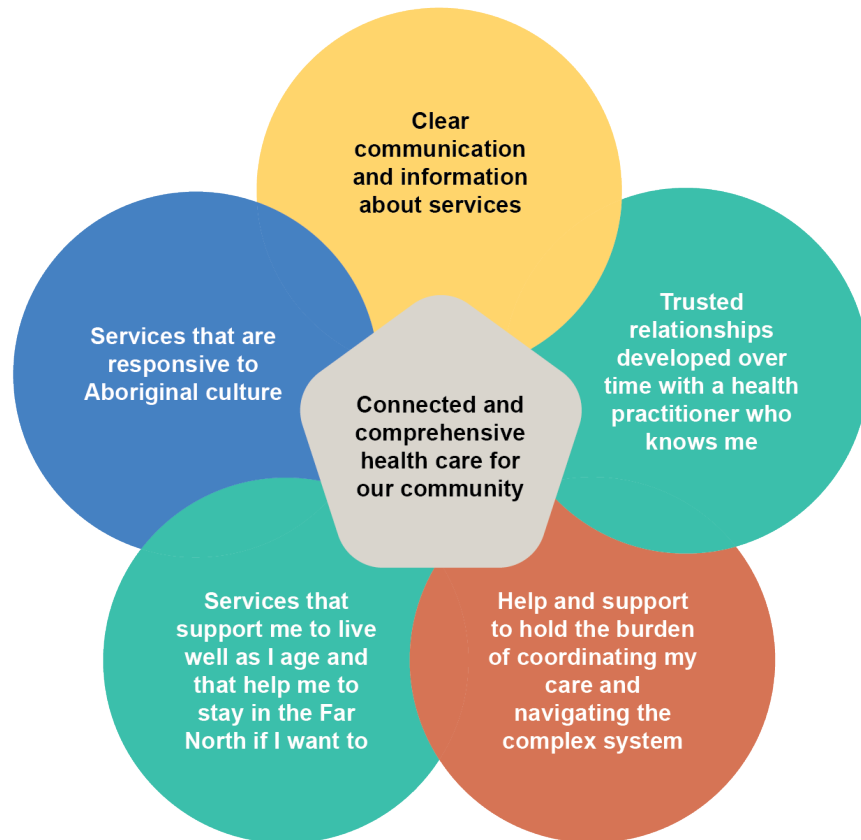
To drive exceptional health and aged care services across the Eyre and Far North.



Health
Eyre and Far North
Local Health Network



What our community, consumers and partners said was important:



What we noticed in the data:



The overall resident population of the Far North catchment is projected to continue **decreasing** through to 2036.



The proportion of the **population aged 80+** is projected to increase significantly 2021- 2036 (99.4%).



There is **high relative socioeconomic disadvantage** within the catchment population compared with all of SA and Australia.



16.3% of the population identify as First Nations with 48% of emergency presentations and 48% of hospital admissions being for people who identify as First Nations.



20.2% of the population speak a language other than English at home.



Air pollution measures (PM2.5) indicate increased risk for diabetes, heart disease, lung conditions and stroke; all of which are higher in the Far North population (compared to SA and Aust).



Coober Pedy* has around double the number of **people living alone** (compared to all SA and Aust).



There were **72 emergency presentations** to Coober Pedy Hospital for every 100 people in the population (compared to between 20-46 per 100 at other similar sized rural health units)[2020/21].



At least 1 in 10 hospital stays had drug and alcohol listed as a co-morbidity in 2020/21.

Summary of service plan recommendations

A range of more detailed recommendations sit under each of the service improvement areas below. These are listed in the full service plan.

PRIORITY AREA	CONSUMER / PARTNER VOICE	SERVICE IMPROVEMENT AREAS	ALIGNMENT WITH STRATEGIC PLAN PRIORITIES
ACCIDENT AND EMERGENCY	<p><i>"...the GP can be booked for days in advance so maybe having more doctors available... will make it so less people feel the need to go to emergency"</i></p>	<ul style="list-style-type: none"> Expand, support, and build the capacity of the accident and emergency workforce. Develop partnerships and processes to support robust local responses to emergency presentations and potentially preventable re-presentations. Develop infrastructure to enhance the response to mental health emergencies. 	<ul style="list-style-type: none"> Responsive services and care Skilled, Supported and Sustainable Workforce Aboriginal Health is Everyone's Business Interconnected Mental Health Services.
FIRST NATIONS HEALTH	<p><i>"More education for patients at discharge in hospitals. How to better manage they're chronic conditions. More Aboriginal health services to support Aboriginal people in the community."</i></p>	<ul style="list-style-type: none"> Prioritise the development of culturally responsive services and service models. Bolster the First Nations workforce in direct service provision and key strategic decision-making roles. Nurture key partnerships with the First Nations community, and with other agencies, working collaboratively towards effective solutions. 	<ul style="list-style-type: none"> Responsive services and care Skilled, Supported and Sustainable Workforce Aboriginal Health is Everyone's Business. Interconnected Mental Health Services.
COMMUNITY-BASED AND PRIMARY CARE	<p><i>"...podiatrists to be more frequent, dietitian...a regular doctor to the town that cares about your family history and builds rapport with patients. Building trusting relationships with families."</i></p>	<ul style="list-style-type: none"> Expand and increase the capacity of community-based and primary care services for enhanced provision of team-based care. Highlight priority infrastructure improvements to enable improved provision of community-based and primary care. Grow our own workforce to retain and expand future services. Build key connections and relationships to enhance access to services, knowledge about services, and to build confidence in service navigation for the community. Work with community and state-wide partners to impact on relevant population health issues. 	<ul style="list-style-type: none"> Responsive services and care Skilled, Supported and Sustainable Workforce Vibrant aged and disability care Aboriginal Health is Everyone's Business
AGED CARE	<p><i>"We are an ageing population. There is a need to expand community services to enable people to stay in their homes longer. "</i></p>	<ul style="list-style-type: none"> Expand the spectrum of aged care services in the Far North, exploring innovative models. Bolster the aged care workforce with a particular focus on growing a local workforce. Boost connections between the community and aged care services. Update and refresh current aged care infrastructure. 	<ul style="list-style-type: none"> Responsive services and care Skilled, Supported and Sustainable Workforce Vibrant aged and disability care Aboriginal Health is Everyone's Business

PRIORITY AREA	CONSUMER / PARTNER VOICE	SERVICE IMPROVEMENT AREAS	ALIGNMENT WITH STRATEGIC PLAN PRIORITIES
INPATIENT MEDICAL	<i>"Coober Pedy is not your usual hospital as we are the only health service in a radius of 650km! Please consider this..."</i>	<ul style="list-style-type: none"> Expand the workforce and improve retention of skilled staff. Foster collaborative team-based care, facilitating improved access to primary and preventative care from the hospital setting. 	<ul style="list-style-type: none"> Responsive services and care Skilled, Supported and Sustainable Workforce Aboriginal Health is Everyone's Business Interconnected Mental Health Services Vibrant aged and disability care.
MENTAL HEALTH	<i>"Mental health, not just social workers but psychologists and psychiatric support even if the latter is tele health"</i>	<ul style="list-style-type: none"> Increase the mental health workforce to enable both broad and targeted mental health support. Actively partner and integrate across sectors to achieve a connected mental health response. 	<ul style="list-style-type: none"> Responsive services and care Skilled, Supported and Sustainable Workforce Aboriginal Health is Everyone's Business. Interconnected Mental Health Services
MATERNITY AND NEONATAL	<i>"Looking after mums and babies (before baby is born and check ups with babies)"</i>	<ul style="list-style-type: none"> Develop systems and processes to support and optimise pre and post natal care. 	<ul style="list-style-type: none"> Responsive services and care Skilled, Supported and Sustainable Workforce Aboriginal Health is Everyone's Business
MEDICAL IMAGING AND PATHOLOGY	<i>"...3 nurses trained to do plain x-rays (for emergency) – important skill to retain"</i>	<ul style="list-style-type: none"> Maintain current service level 	<ul style="list-style-type: none"> Responsive services and care Skilled, Supported and Sustainable Workforce

The recommendations contained within the service plan for Far North Health Services will be prioritised in alignment with the EFNLHN Strategic and Operational Plans with a view to implementation over the next five years and beyond.

Some recommendations are ready for implementation while others are dependent on a range of other factors. For further detail and the full range of service improvements proposed for Far North Health Services, please refer to the detailed service plan document.

