

## **New South Wales and Australian Capital Territory – Statewide benchmarking report January 2022 – June 2022**

Antibacterial utilisation rates provided in this report are calculated using the number of defined daily doses (DDDs) of the antibacterial class consumed each month per 1,000 occupied bed days.

Contributing hospitals are assigned to Australian Institute for Health and Welfare (AIHW) defined peer groups.<sup>1</sup> Contributing hospitals can find their de-identifying code via the NAUSP Portal 'Maintain My Hospital' drop-down menu.

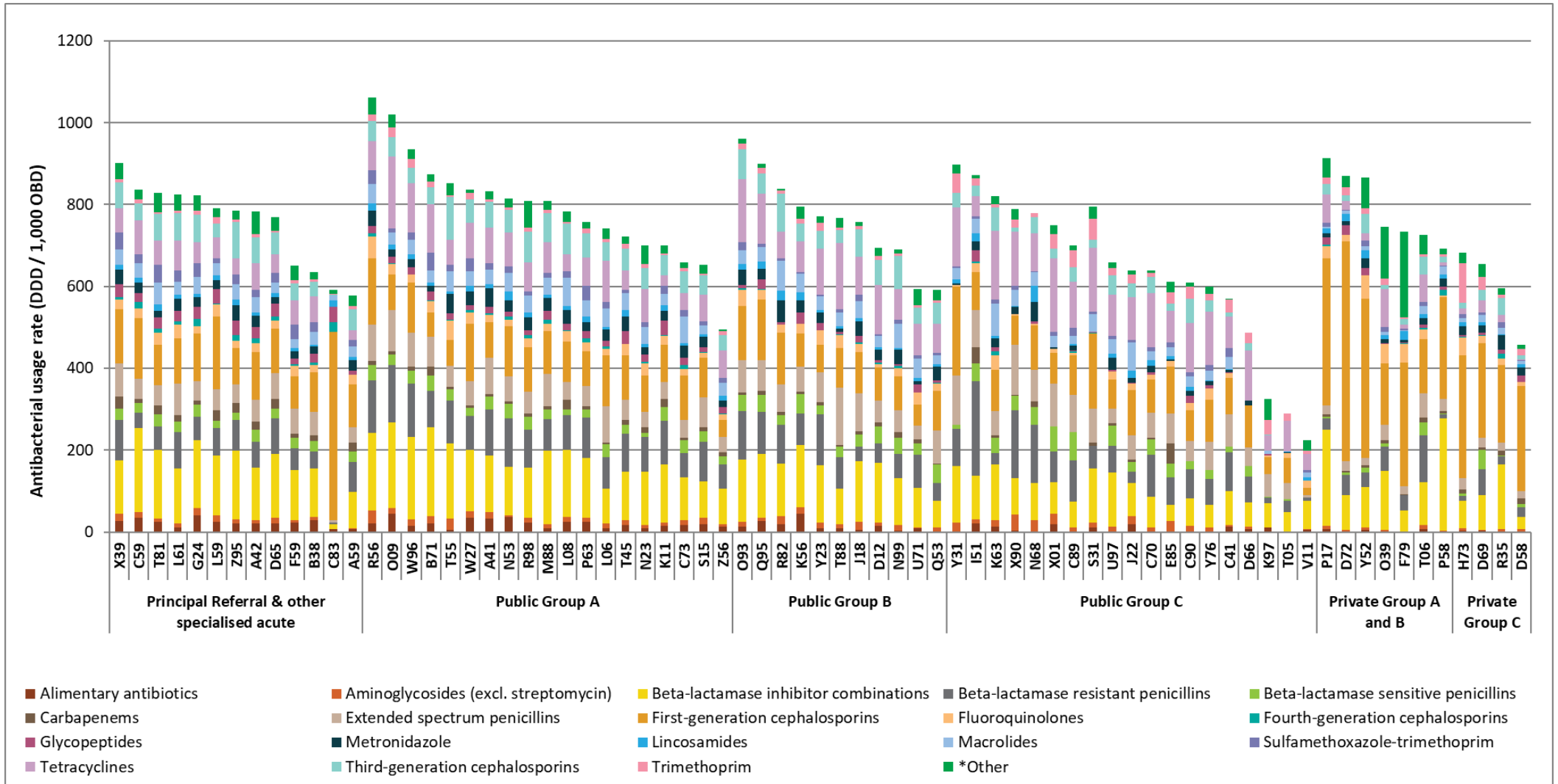
DDD values for each antimicrobial are assigned by the World Health Organization based on the "assumed average maintenance dose per day for the main indication in adults". DDDs are reviewed annually by the WHO as dosing recommendations change over time. For more information refer to: [https://www.whocc.no/atc\\_ddd\\_methodology/purpose\\_of\\_the\\_atc\\_ddd\\_system/](https://www.whocc.no/atc_ddd_methodology/purpose_of_the_atc_ddd_system/)

The chart below presents total acute antibacterial usage data for the respective contributing hospitals over the six-month period from 1 January 2022 to 30 June 2022. Unless otherwise specified, the aggregate rates exclude usage in the emergency department and the operating theatre.

---

<sup>1</sup> AIHW. *Hospital resources 2017-18: Australian hospital statistics*. Available from <https://www.aihw.gov.au/reports/hospitals/hospital-resources-2017-18-ahs/data>

Chart 1: Total acute antibacterial usage rates (DDD/1000 OBD) in NAUSP contributor hospitals, by peer group, New South Wales & Australian Capital Territory, Jan-Jun 2022 (excludes emergency and operating theatre)



Alimentary antibiotics = rifaximin, fidaxomicin. \*Other = amphenicols, monobactams, nitrofurans, linezolid, daptomycin, other cephalosporins, polymyxins, rifamycins, second-generation cephalosporins, steroids, streptogramins and streptomycin.

This report includes data from the following 73 hospitals in NSW & ACT:

Armidale Hospital	Liverpool Hospital
Auburn Hospital	Macksville District Hospital
Bankstown Hospital	Maitland Hospital
Bathurst Base Hospital	Manning Base Hospital
Bellinger River District Hospital	Milton-Ulladulla Hospital
Belmont Hospital	Mona Vale Hospital
Blacktown Hospital	Moree Hospital
Blue Mountains Hospital	Mudgee District Hospital
Bowral Hospital	Muswellbrook Hospital
Brisbane Waters Private Hospital	Narrabri Hospital
Campbelltown Hospital	Nepean Hospital
Canberra Hospital	Nepean Private Hospital
Canterbury Hospital	Newcastle Mater
Cessnock District Hospital	Northern Beaches Hospital
Chris O'Brien Lifehouse	Orange Health Service
Coffs Harbour Hospital	Parkes Hospital
Concord Hospital	Port Macquarie Base Hospital
Dubbo Base Hospital	Prince Of Wales Hospital
Fairfield Hospital	Royal North Shore Hospital
Forbes District Hospital	Royal Prince Alfred Hospital
Forster Private Hospital	Ryde Hospital
Glen Innes District Hospital	Scott Memorial Hospital
Gloucester Soldiers' Memorial Hospital	Shellharbour Hospital
Gosford Private Hospital	Shoalhaven Hospital
Grafton Base Hospital	Singleton District Hospital
Griffith Base Hospital	St George Hospital
Gunnedah Hospital	St Vincent's Hospital Sydney
Hornsby Ku-Ring-Gai Hospital	St Vincent's Private Hospital Sydney
Hurstville Private Hospital	Sutherland Hospital
Institute Of Rheumatology And Orthopaedics	Sydney Adventist Hospital
Inverell District Hospital	Tamworth Hospital
John Hunter Hospital	The Tweed Hospital
Kareena Private Hospital	Wagga Wagga Base Hospital
Kempsey District Hospital	Westmead Private Hospital
Kurri Kurri Hospital	Wollongong Hospital
Lingard Private Hospital	Wyong Hospital
Lismore Base Hospital	

<b>ANTIBACTERIAL CLASSES</b>				
<b>Alimentary antibiotics</b>	fidaxomicin	<b>Lincosamides</b>	clindamycin	
	paromomycin		lincomycin	
<b>Aminoglycosides</b>	rifaximin	<b>Macrolides</b>	azithromycin	
	amikacin		clarithromycin	
	gentamycin		erythromycin	
	neomycin		roxithromycin	
<b>β-lactamase inhibitor combinations</b>	tobramycin	<b>Monobactams</b>	aztreonam	
	amoxicillin - clavulanate		<b>Nitrofurans derivatives</b>	nitrofurantoin
<b>β-lactamase resistant penicillins</b>	piperacillin - tazobactam	<b>Polymyxins</b>	colistin	
	dicloxacillin		polymyxin B	
<b>β-lactamase sensitive penicillins</b>	flucloxacillin	<b>Second-generation cephalosporins</b>	cefaclor	
	benzathine benzylpenicillin		cefamandole	
	benzylpenicillin		cefotetan	
	phenoxymethylpenicillin		cefoxitin	
<b>Carbapenems</b>	procaine benzylpenicillin	<b>Steroid antibacterials</b>	cefuroxime	
	doripenem		fusidic acid	
	ertapenem		<b>Streptogramins</b>	pristinamycin
	imipenem - cilastatin		<b>Streptomycins</b>	streptomycin
	meropenem	<b>Sulfonamide-trimethoprim combinations</b>	sulfamethoxazole - trimethoprim	
<b>Extended-spectrum penicillins</b>	meropenem - vaborbactam	<b>Tetracyclines</b>	doxycycline	
	amoxicillin		minocycline	
	ampicillin		tetracycline	
	pivmecillinam		tigecycline	
<b>First-generation cephalosporins</b>	temocillin	<b>Third-generation cephalosporins</b>	cefixime	
	cefalexin		cefotaxime	
	cefalotin		ceftazidime	
<b>Fluoroquinolones</b>	cefazolin		<b>Trimethoprim</b>	ceftazidime - avibactam
	ciprofloxacin	ceftriaxone		
	levofloxacin	<b>Other (including other cephalosporins and penems)</b>		ceftaroline fosamil
	moxifloxacin		ceftolozane - tazobactam	
norfloxacin	daptomycin			
<b>Fourth-generation cephalosporins</b>	cefepime		faropenem	
	cefpirome	fosfomycin		
	<b>Glycopeptides</b>	dalbavancin	linezolid	
		oritavancin	rifampicin	
teicoplanin		tedizolid		
vancomycin				
<b>Imidazole derivatives</b>	metronidazole			
<b>Intermediate-acting sulfonamides</b>	sulfadiazine			

*Disclaimer: Data presented in this report were correct at the time of publication. As additional hospitals join NAUSP, retrospective data are included. Data may change when quality assurance processes identify the need for data updates.*

The National Antimicrobial Utilisation Surveillance Program (NAUSP) is funded by the Commonwealth Department of Health and Aged Care. NAUSP is administered by Antimicrobial Programs, Communicable Disease Control Branch, Department for Health and Wellbeing, Government of South Australia. All individual hospital data contributed to this program will remain de-identified unless otherwise agreed in writing. Aggregated data may be provided to all contributors, the ACSQHC and the Commonwealth.