

OFFICIAL

Infection Prevention and Control

# Bed Management Toolkit

For infectious diseases  
and multi-resistant  
organisms

Last updated: 21 April 2022



Government  
of South Australia

SA Health

OFFICIAL

## Table of contents

Introduction .....	3
Flowchart 1: Infectious disease priority guide for allocation of isolation rooms and & patient cohorting.....	4
Flowchart 2: Bed management: Multi-resistant Gram negative (MRGN) Organisms .....	5
Flowchart 3: Bed management: Methicillin-resistant <i>Staphylococcus aureus</i> (MRSA) .....	6
Flowchart 4: Bed management: Vancomycin-resistant enterococci (VRE) .....	7

## Version control and change history

Version	Date from	Date to	Amendment
1.8	21/04/2022	Current	Full review
1.7	1/04/2022	21/04/2022	Minor changes in Table 1
1.6	15/08/2020	1/04/2022	Add COVID-19 in Table 1 and version control
1.5	9/01/2020	15/08/2020	Update in align with the National Infection Control Guidelines and removal infectious diseases table
1.4	21/11/2017	9/01/2020	Update ESBL
1.3	24/10/2017	21/11/2017	Update precautions
1.2	30/09/2017	24/10/2017	General update
1.1	17/09/2017	30/09/2017	General update
1.0	12/09/2017	17/09/2017	Original version

## Introduction

This bed management toolkit has been developed to assist clinicians and bed management coordinators in healthcare facilities when single rooms are in short supply.

It will help in determining whether patients in acute care hospitals or residents of long-term care facilities e.g., aged care or rehabilitation with certain infectious diseases or multi-resistant organisms require single rooms and ensuite bathrooms.

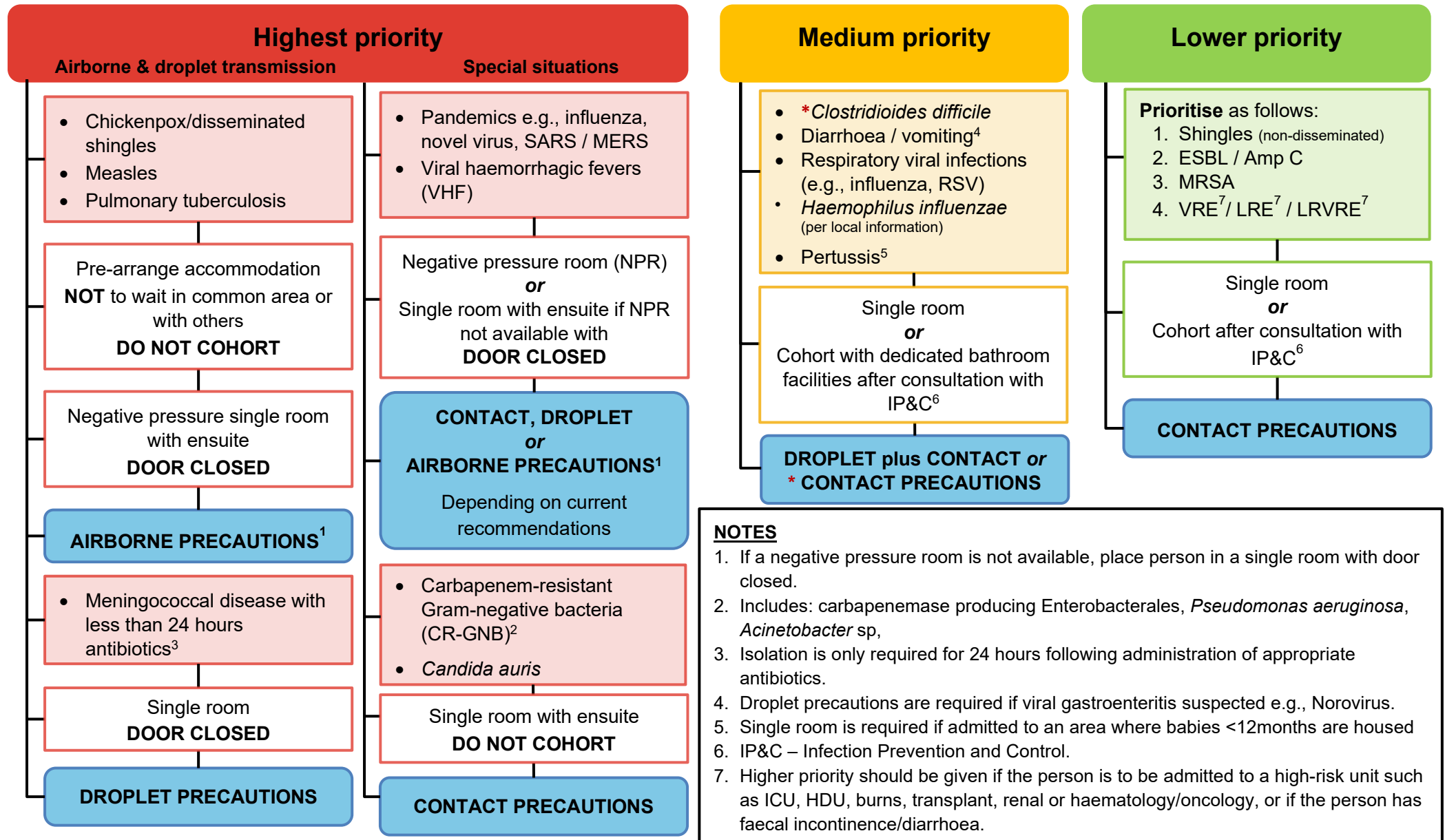
**In large acute facilities, cohorting should only be initiated after consultation with Infection Prevention and Control staff at the site/Local health Network, or the on call Infectious Diseases Consultant if available.**

For further information please see specific guidelines:

- > [Infection Control Management of Infectious Diseases Summary Table](#)
- > [Methicillin-resistant \*Staphylococcus aureus\* \(MRSA\): Infection prevention and control clinical guideline](#)
- > [Multi-resistant Gram-negative micro-organisms \(MRGN\): Infection prevention and control clinical guideline](#)
- > [Vancomycin-resistant enterococci \(VRE\): Infection prevention and control clinical guideline](#)

## Flowchart 1: Infectious disease priority guide for allocation of isolation rooms and & patient cohorting

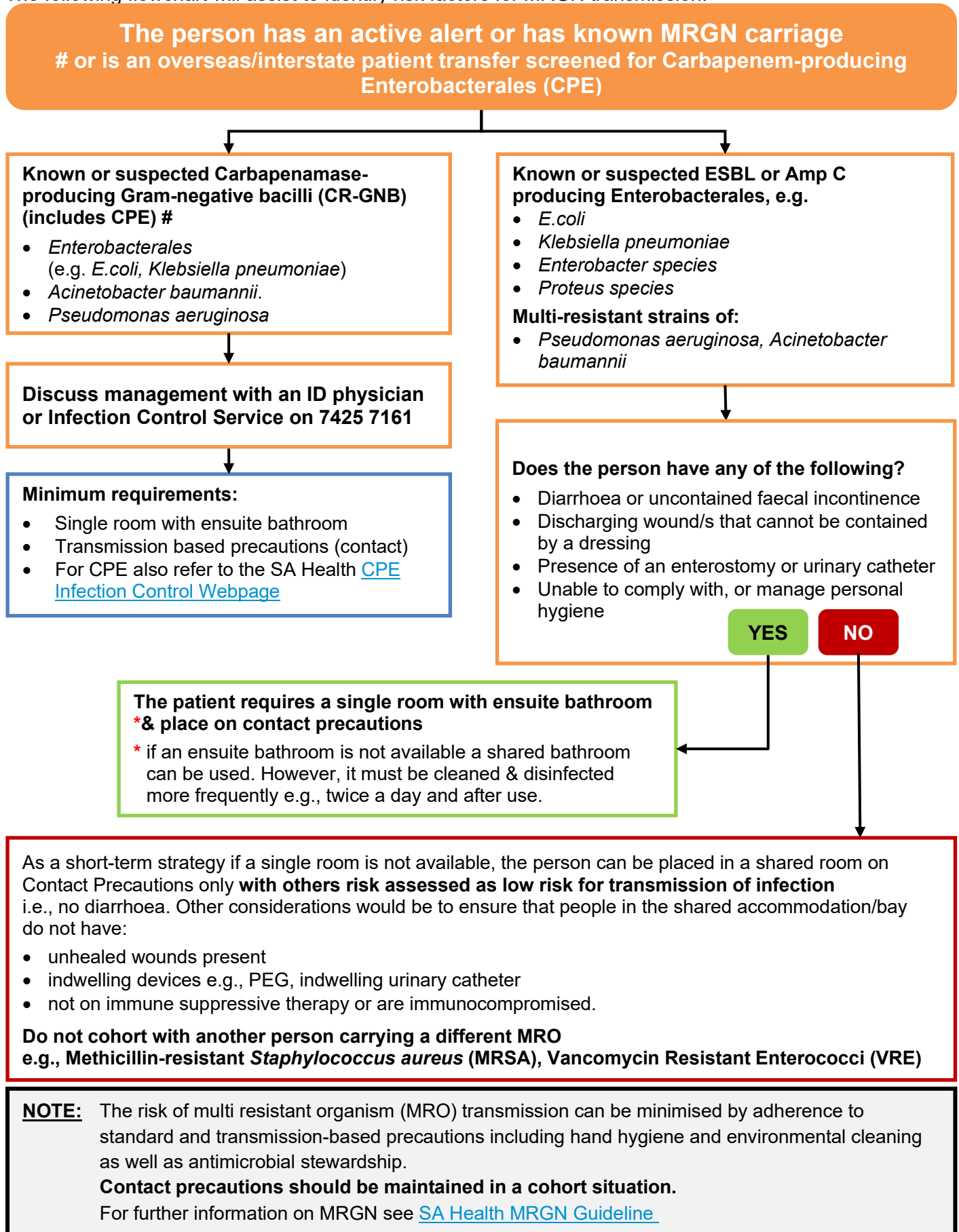
On suspicion of, or proven disease, the following guidance will assist with single room allocation & bed management. Infectious diseases of significance or those spread via the airborne route are generally regarded as the highest priority. Infectious periods for common and significant infectious diseases for which isolation as part of transmission-based precautions is required, refer to the [Infectious Diseases Summary Table](#).



## Flowchart 2: Bed management: Multi-resistant Gram negative (MRGN) Organisms

Placement should be based on a risk assessment.

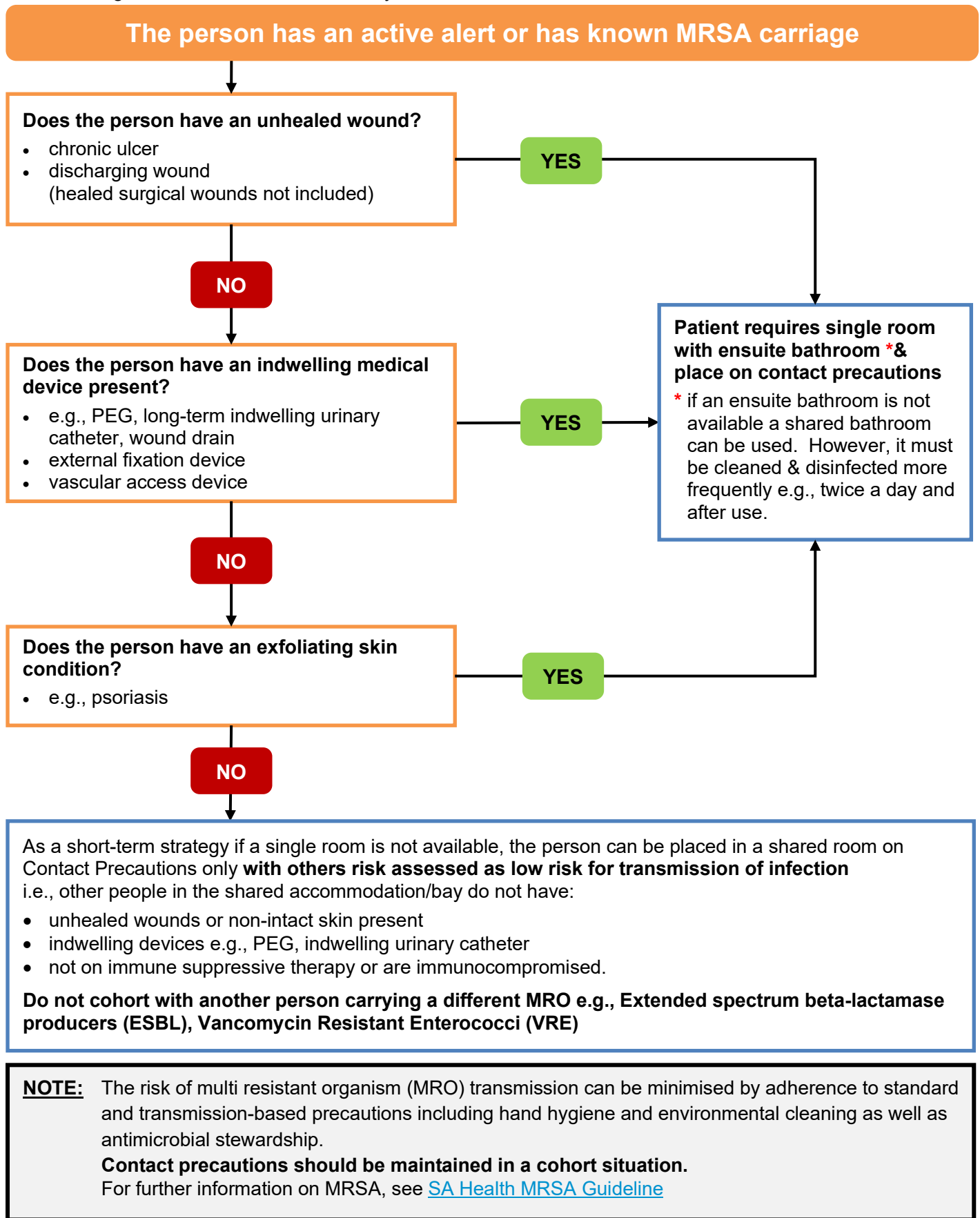
The following flowchart will assist to identify risk factors for MRGN transmission.



### Flowchart 3: Bed management: Methicillin-resistant *Staphylococcus aureus* (MRSA)

Placement should be based on a risk assessment.

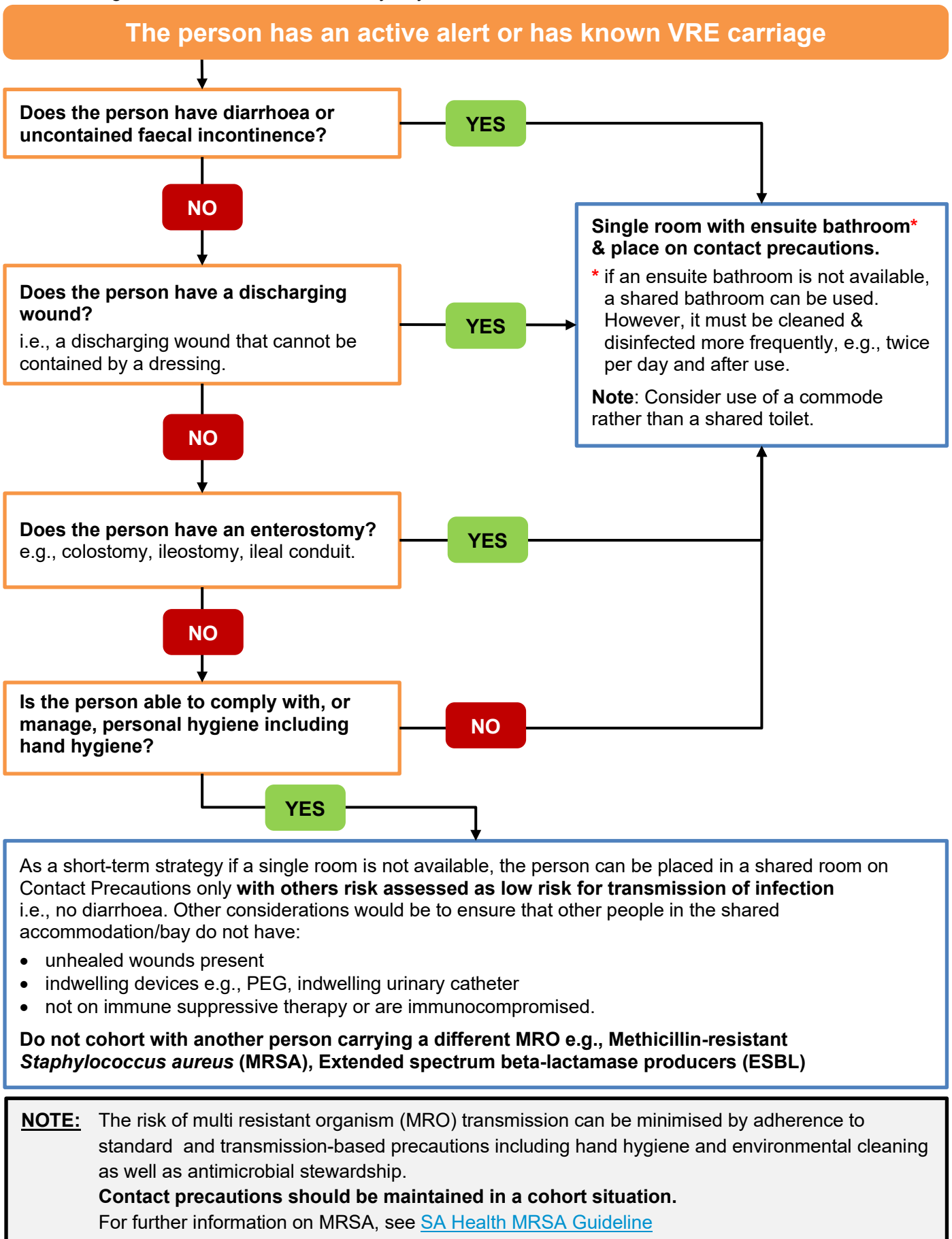
The following flowchart will assist to identify risk factors for MRSA transmission.



## Flowchart 4: Bed management: Vancomycin-resistant enterococci (VRE)

Placement should be based on a risk assessment.

The following flowchart will assist to identify any risk factors for VRE transmission.



---

For more information

---

**Infection Control Service**  
**Communicable Disease Control Branch**  
**Adelaide SA 5000**  
**Telephone: 1300 252 271**  
[www.sahealth.sa.gov.au/infectionprevention](http://www.sahealth.sa.gov.au/infectionprevention)

OFFICIAL



[www.ausgoal.gov.au/creative-commons](http://www.ausgoal.gov.au/creative-commons)

© Department for Health and Wellbeing, Government of South Australia. All rights reserved