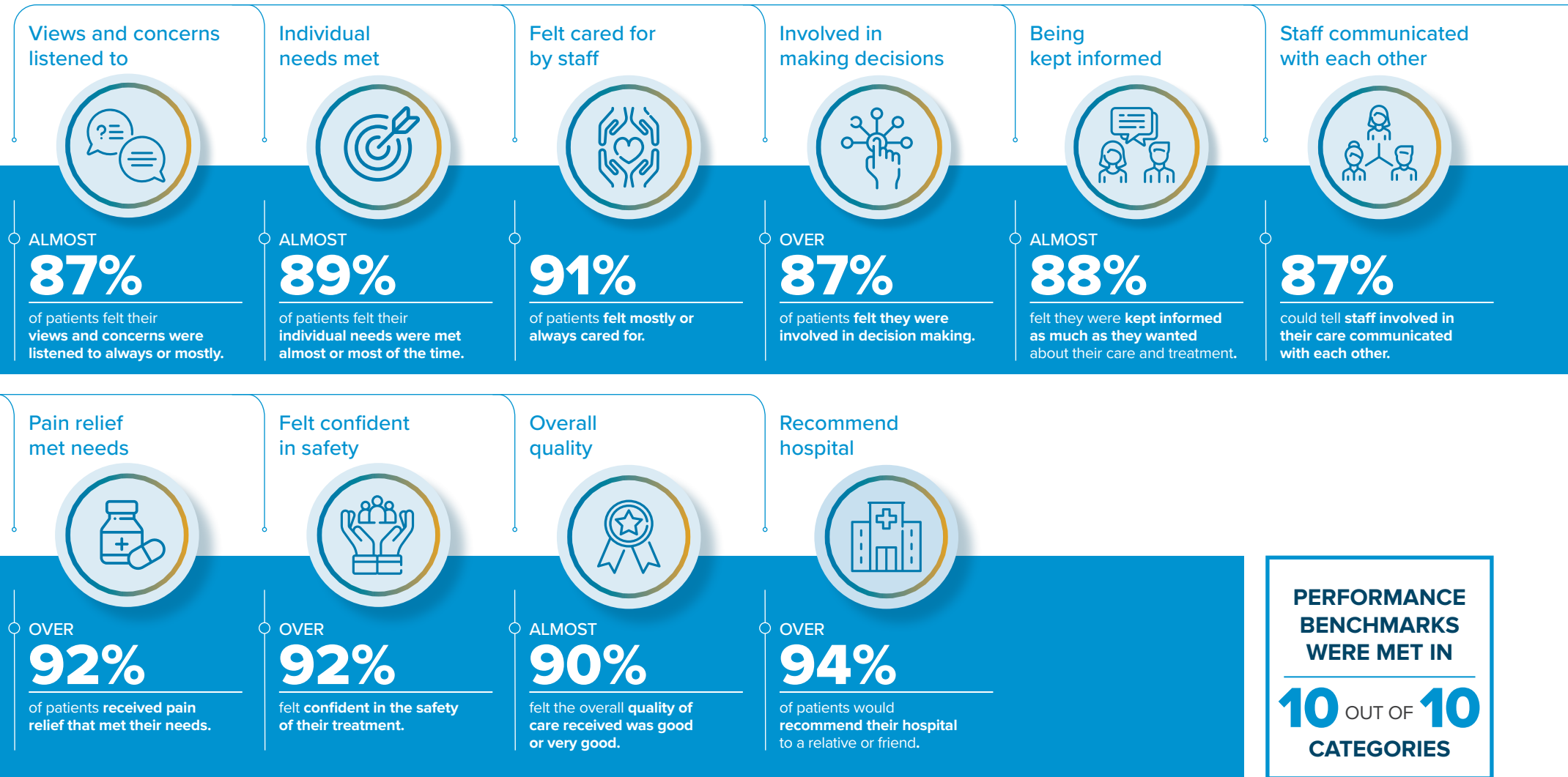


Measuring Consumer Experience 2021

In 2020, **4,003** South Australians were interviewed and their responses were analysed to measure hospital performance. Surveys were undertaken between January to December 2020.



Questions are based on the Australian Hospital Patient Experience Question Set. SA Health benchmark is 85%

Find out more by visiting: sahealth.sa.gov.au/safetyandquality



Government of South Australia
SA Health